



Dopyt

PNEUMATICKÉ VALCE

Séria G450

G450APSK0050A00

Pneumatiký valec Ø125 mm, 50 mm

- ISO 15552
- Ø125mm až 200mm
- Zdvih 5mm až 100mm
- Jedno alebo dvojčinné

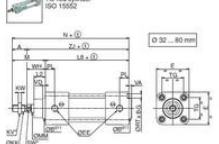


POPIS PRODUKTU

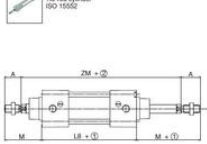
ŠPECIFIKÁCIA

Druh montáže	Nezávislý
Funkcia	Dvojčinný, Pneumatické tlmenie
Materiál čela	Hliník
Materiál tela	Eloxovaný hliník
Matica piestnice	Pozinkovaná oceľ
Max. dovolený tlak	10 bar
Piestnica	Pochrómovaná kalená oceľ
Pracovný tlak dvojčinný max.	10 bar
Pracovný tlak dvojčinný min.	0 bar
Prevádzková teplota max.	70 °C
Prevádzková teplota min.	-20 °C
Priemer piestu	125 mm
Pripojenie pre pilotný vzduch	G1/2
Tesnenie piestnice	PUR
Tesnenie piestu	PUR
Vnútorne diely	Hliník, POM
Vnútorň piest	Hliník
Zdvih	50 mm

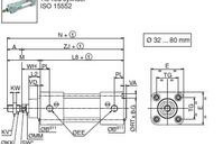
DIMENSIONS (mm), WEIGHT (kg)



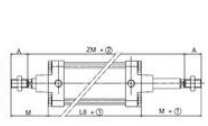
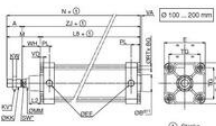
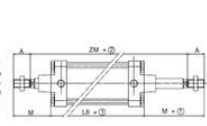
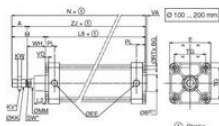
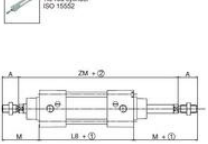
THROUGH-ROD TYPE CYLINDER



DIMENSIONS (mm), WEIGHT (kg)



THROUGH-ROD TYPE CYLINDER



Ø	A	DBP	BG	E	DEE	ØDK	KV	KW	L2	L3	M	ØMM	N	PL	ØRT	TG	VA	VD	WH	Z2	ZM	W	W1	W2	
32	32	36	16	40	50	Ø16	M12x1.25	16	8	19	154	160	154	16	M6	13	38	11	4	4	30	159	140	0.564	0.208
40	24	35	18	54	64	Ø14	M12x1.25	18	8	19	105	110	105	16	M6	13	38	11	4	4	30	159	140	0.840	0.335
50	24	40	18	64	74	Ø14	M16x1.5	24	8	24	106	110	106	16	M6	17	42.5	11	4	4	37	145	160	1.290	0.470
63	24	45	18	78	88	Ø14	M16x1.5	24	8	24	121	126	121	16	M8	17	56.5	11	4	4	37	159	190	1.500	0.540
80	40	45	17	86	96	Ø16	M20x1.5	30	10	30	126	130	126	16	M10	22	72	11	4	4	46	174	200	2.060	0.690
100	40	55	17	115	125	Ø16	M20x1.5	30	10	35	138	142	138	16	M10	22	89	11	4	4	51	189	240	3.075	1.000
125	54	60	24	140	150	Ø16	M20x1.5	30	10	40	150	154	150	16	M12	27	110	11	4	4	60	220	290	4.365	1.360
160	72	80	24	160	170	Ø16	M20x1.5	30	10	50	160	164	160	16	M12	27	140	11	4	4	80	240	340	7.030	2.100
200	72	78	24	190	200	Ø16	M20x1.5	30	10	58	160	164	160	16	M12	27	170	11	4	4	95	270	370	17.070	5.000

(H) Weight to be added per additional 100 mm length.

Ø	A	DBP	BG	E	DEE	ØDK	KV	KW	L2	L3	M	ØMM	N	PL	ØRT	TG	VA	VD	WH	Z2	ZM	W	W1	W2	
32	32	36	16	40	50	Ø16	M12x1.25	16	8	19	154	160	154	16	M6	13	38	11	4	4	30	159	140	0.564	0.208
40	24	35	18	54	64	Ø14	M12x1.25	18	8	19	105	110	105	16	M6	13	38	11	4	4	30	159	140	0.840	0.335
50	24	40	18	64	74	Ø14	M16x1.5	24	8	24	106	110	106	16	M6	17	42.5	11	4	4	37	145	160	1.290	0.470
63	24	45	18	78	88	Ø14	M16x1.5	24	8	24	121	126	121	16	M8	17	56.5	11	4	4	37	159	190	1.500	0.540
80	40	45	17	86	96	Ø16	M20x1.5	30	10	30	126	130	126	16	M10	22	72	11	4	4	46	174	200	2.060	0.690
100	40	55	17	115	125	Ø16	M20x1.5	30	10	35	138	142	138	16	M10	22	89	11	4	4	51	189	240	3.075	1.000
125	54	60	24	140	150	Ø16	M20x1.5	30	10	40	150	154	150	16	M12	27	110	11	4	4	60	220	290	4.365	1.360
160	72	80	24	160	170	Ø16	M20x1.5	30	10	50	160	164	160	16	M12	27	140	11	4	4	80	240	340	7.030	2.100
200	72	78	24	190	200	Ø16	M20x1.5	30	10	58	160	164	160	16	M12	27	170	11	4	4	95	270	370	17.070	5.000

(H) Weight to be added per additional 100 mm length.