



Dopyt

## SAMOSTATNÉ VIACTÓNOVÉ SIRÉNY SÉRIE ES1 / ES2

Série ES1/ES2

C110620005  
ES1 siréna červená 32 tónov 24 V

- Výber zo 32 druhov tónov
- 86 - 106 dB
- Krytie IP65
- Priaznivá cena

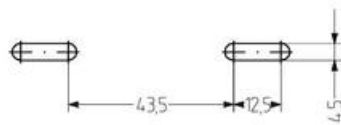
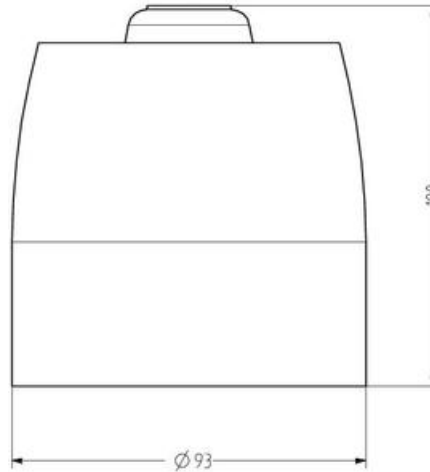
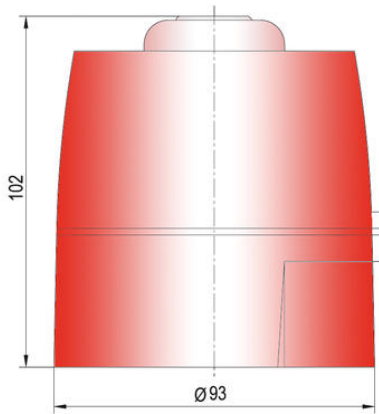


### POPIS PRODUKTU

Sirény pre vnútorné i vonkajšie použitie (IP 65), druh tónu je voliteľný DIP-prepínačom vnútri. Oba typy možno objednať v červenej a bielej farbe.

### ŠPECIFIKÁCIA

Druh montáže	Nezávislý
Farba tela	Červená RAL 3000
Frekvencia max	2900 Hz
Frekvencia min	440 Hz
Hladina zvuku max	106 dB
Hladina zvuku min	86 dB
Hmotnosť	250 g
Menovitý prúd max	0,035 A
Menovitý prúd min	0,006 A
Napájacie napätie DC max.	24 V DC
Napájacie napätie DC min.	24 V DC
Ovládanie zvuku	Áno
Počet tónov	32 ks
Prevádzková teplota max.	70 °C
Prevádzková teplota min.	-20 °C
Priemer	93 mm
Prierez vodičov	2,5 mm <sup>2</sup>



Tone table

ES1

No.	Sound	Description	DR	Std. single alarm Hz
1	LF sweep	800-1000 Hz @ 3 s	001	800 cont.
2	alternative wailer	800/700 Hz @ 2 Hz	010	800 cont.
3	wailer tone	800/1000 Hz @ 3 s	010	800 cont.
4	alternative wailer	800/500 Hz @ 2 Hz	010	800 cont.
5	MF back up interrupted tone	2.800 Hz @ 1.2 s on/off	0201	2.800 cont.
6	LF back up alarm	800 Hz @ 100 ms on/off	0202	800 cont.
7	MF back up interrupted tone, fast	2.800 Hz @ 100 ms on/off	0203	800 cont.
8	LF continuous tone 850/850	800 Hz cont.	0300	same tone
9	swamp tone	800/900 Hz @ 1 Hz	0301	800 cont.
10	acceleration alarm	interrupted tone 970 Hz @ 0.625 ms on/off	0302	800/1.200 1.75 s on 0.25 s off
11	Dutch swamp tone	950 Hz cont.	0303	800/1.200 0.5 s on
12	interrupted swamp tone	600/600 Hz @ 2 Hz	0304	600 cont.
13	swamp tone	800/700 Hz @ 2 Hz	0305	800 cont.
14	alternative MF alarm	2.800/2.800 Hz @ 2 Hz	0306	2.800 cont.
15	MF off sweep	2.800/2.800 Hz @ 2 Hz	0307	2.800 cont.
16	LF temporal pattern LF	800 Hz @ 0.5 s on/0.5 s off x 3, off for 1.5 s, repeat	0308	800 cont.
17	interrupted tone B3 Standard	950 Hz @ 0.5 s on/off	0309	800 cont.
18	MF/MDF LF 850/850 Hz 1/1000	850 Hz @ 0.5 s on/off	0310	same tone
19	interrupted tone, medium	1000 Hz @ 0.25 s on/off	0311	800 cont.
20	800/800 MF	970 Hz @ 0.5 s on/off	0312	same tone
21	continuous tone	800 Hz	0313	same tone
22	LF tone	800/700 Hz sweep @ 100 Hz	0314	800 cont.
23	MF continuous	2.800 Hz	0315	2.800 cont.
24	swamp tone	800-970 Hz @ 2 Hz	0316	800 cont.
25	Diagonal DR tone	swamp 1.000-800 Hz @ 1 Hz	0317	800 cont.
26	Swamp 100 Hz signal	intermittent 800 Hz @ 100 ms on/off	0318	same tone
27	French tone 87/808	656 Hz @ 100 ms and 940 Hz @ 100 ms	0319	800 cont.
28	Swamp 100 Hz clear signal	continuous 800 Hz	0320	same tone
29	LF temporal pattern MF	2.800 Hz @ 0.5 s on/off x 3, off for 1.5 s, repeat	0321	2.800 cont.
30	Swamp 100 Hz, short	800/1.200 Hz sweep then holding 1.2 s	0322	800 cont.
31	FF 950/1.75 alarm	alternating tone 800/700 Hz @ 2 Hz	0323	800 cont.
32	Swamp 100 Hz, long	800/1.200 Hz @ 3 s ramp/3 s holding	0324	800 cont.

The sound pressure decreases by 6 dB when doubling the distance; the following distance table is to be seen as indication, as also factors like tone type, wind speed, wind direction, humidity, weather conditions etc. do influence the sound pressure level.

Distance (m)	Sound pressure dB (A)																					
1	65	70	75	80	85	90	94	96	98	100	102	104	106	108	110	112	114	116	118	120		
2	59	64	69	74	79	84	88	88	90	92	94	96	98	100	102	104	106	108	110	112	114	
3	55	60	65	70	75	80	82	84	86	88	90	92	94	96	98	100	102	104	106	108	110	
5	51	56	61	66	71	76	78	80	82	84	86	88	90	92	94	96	98	100	102	104	106	108
10	45	50	55	60	65	70	72	74	76	78	80	82	84	86	88	90	92	94	96	98	100	102
20	39	44	49	54	59	64	66	68	70	72	74	76	78	80	82	84	86	88	90	92	94	96
30	35	40	45	50	55	60	62	64	66	68	70	72	74	76	78	80	82	84	86	88	90	92
50	30	35	40	45	50	55	58	60	62	64	66	68	70	72	74	76	78	80	82	84	86	88
100	25	30	35	40	45	50	52	54	56	58	60	62	64	66	68	70	72	74	76	78	80	82
200	20	25	30	35	40	45	48	50	52	54	56	58	60	62	64	66	68	70	72	74	76	78
500	15	20	25	30	35	40	42	44	46	48	50	52	54	56	58	60	62	64	66	68	70	72

The sound pressure decreases by 6 dB when doubling the distance.