



## ZVUKOVÉ MODULY

826016.00

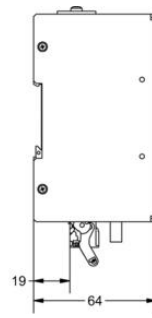
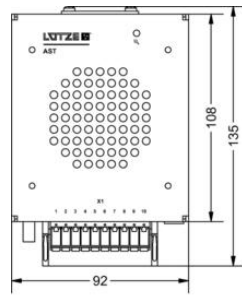
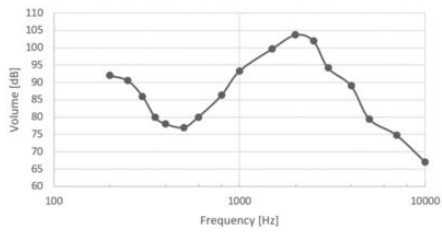
- Napájacie napätie 24-110 V DC
- Menovitý prúd 0,2/0,3 A
- Montáž na DIN lištu a stenu
- Kompaktné rozmery



### POPIS PRODUKTU

### ŠPECIFIKÁCIA

|                          |  |
|--------------------------|--|
| Adjustable current max   | 0,3 A  |
| Frequency bandwidth      | 350–5800 Hz  |
| Hmotnosť                 | 0,578 kg   |
| Montáž                   | DIN lišta  |
| Napájacie napätie        | 24–110 V DC  |
| Rozměry                  | 92×92×64 mm  |
| Rozsah vstupného napätia | 14,4–154 V DC  |
| Sound pressure           | 104 dB   |
| Temperature range        | -40...+70 (+85 10 min.) °C   |
| Trieda krytia            | IP20   |
| Typ pripojenia           | Push-in  |
| Zhoda s normami          | EN 50124-1:2001-03, EN 50155:2007-07, EN 50121-3-2:2016-12, EN 61373:2010-09 |



| Pin | Function           |
|-----|--------------------|
| 1   | Vdd (24 V – 110 V) |
| 2   | Vss (0 V)          |
| 3   | Input 1 (I1)       |
| 4   | Input 2 (I2)       |
| 5   | Input 3 (I3)       |
| 6   | Input 4 (I4)       |
| 7   | Input 5 (I5)       |
| 8   | Input 6 (I6)       |
| 9   | Status (S)         |
| 10  | N.C.               |