



Dopyt

## ODSTREDIVÉ ČERPADLÁ

Séria 50850

50850-2012

Odstredivé čerpadlá



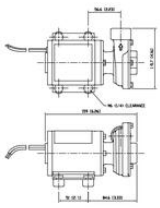
- Prietok až 50 l/min
- Tlak až 0,6 Bar



### POPIS PRODUKTU

### ŠPECIFIKÁCIA

Current	12 V DC
Elastomer	Nitril
Hmotnosť	2,9 kg
Material impeller	Odolný voči kyselinám
Material of axle seal	Uhlík / keramika
Material of shaft	Odolný voči kyselinám
Materiál tela	Odolný voči kyselinám
Materiál tesnenia	Nitril
Max. dovolený tlak	0,6 bar
Prietok max.	50 l/min
Procesné pripojenie	3/4 BSP
Prúd max.	7 A
Teplota média do	95 °C
Teplota média od	4 °C
Viscosity Max	20 cP



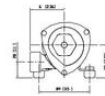
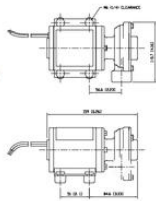
Dimensions in mm (inches)  
Weight 2.5kg (5.5lbs)

50850-2012/50850-0012

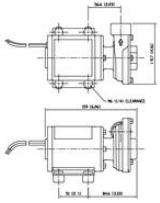
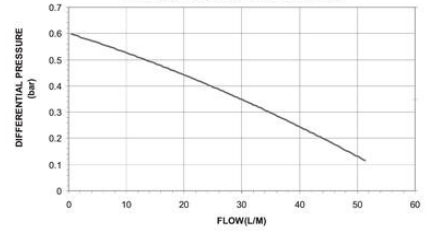


Dimensions in mm (inches)  
Weight 2.54kg (5.6lbs)

50850-2124



12 volt Hybrid Cyclone Performance Tests



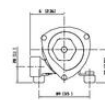
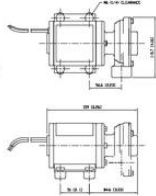
Dimensions in mm (inches)  
Weight 2.5kg (5.5lbs)

50850-2012/50850-0012



Dimensions in mm (inches)  
Weight 2.54kg (5.6lbs)

50850-2124



12 volt Hybrid Cyclone Performance Tests

